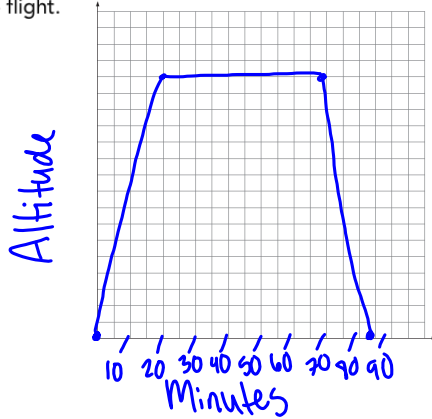


Example

An airplane flew from Melbourne, Australia to Sydney, Australia in 85 minutes. The plane took 20 minutes to reach its cruising altitude and 15 minutes to descend into Sydney. Sketch a graph that shows the plane's altitude during the flight.

20 mins increasing
15 mins decreasing
50 mins constant

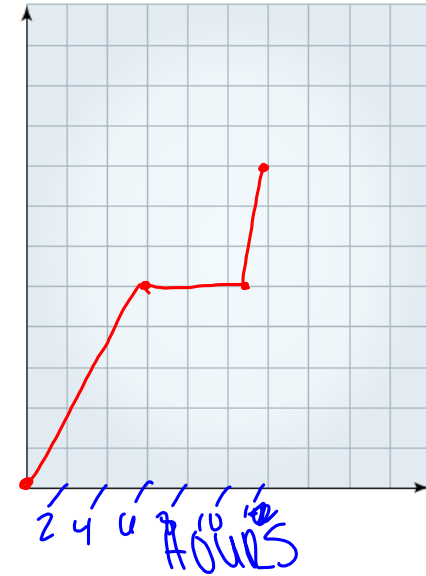


Got It?

You have an empty bucket in your yard to collect rainwater. Rain falls for six hours and then stops. After five hours, the rain begins again and lasts for one more hour.

6 hrs increase
5 hrs constant
1 hr increasing

Rain in Bucket

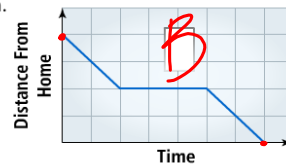


Example Continued

Match each verbal description with its corresponding graph.

A

You leave home and ride your bicycle to the library, where you stay for a while doing research for your science report. Then you ride to your friend's house.



B

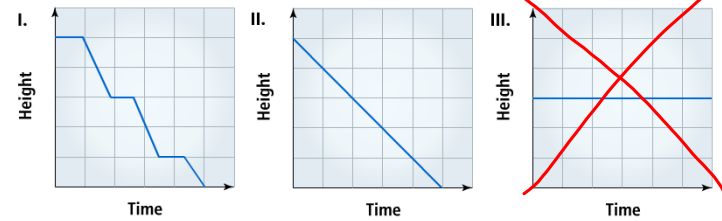
You ride your bicycle home from soccer practice. On the way, you stop at your friend's house for a while and then go straight home.



Got It?

Each graph describes the height of a candle over a certain period of time. Which graph is *not* a reasonable description for this situation?

You light a candle and let it burn until it burns out.



What additional information do you need to know in order to choose which graph better matches the situation?